



**IAN  
DOUGLAS-  
JONES**

ARCHITECTURE +  
DESIGN

CURRICULUM  
VITAE

SELECTED  
WORK



[www .i-n-d-j.com](http://www.i-n-d-j.com)



[ian @ i-n-d-j.com](mailto:ian@i-n-d-j.com)



# curriculum vitae

**INTRODUCTION** Ian is a young british designer based in Shanghai P.R. China, with experience in the worlds foremost emerging economy Ian is a lead designer for internationally acclaimed architecture studio Broadway Malyan. Ian was quickly made associate after successfully leading a high profile supertall tower to finalist placing in an international design competition beating star-architects of repute.

A member of the senior management team at Broadway Malyan Shanghai Ian has been an integral part of the studio's development. He has been pivotal in business development, marketing & design; instigating the publication of 'works - broadway malyan', a dual language book showcasing selected projects in the Asia region. Ian has been Instrumental in studio resourcing & budgeting, reporting directly to the Director of Architecture Shanghai.

Leading teams up to 12 staff with close relations to third party consultants Ian has successfully driven large scale projects from concept to detailed design. China work includes large scale mixed use, retail, workplace, hospitality & urban design with a small 2000m2 pavilion to a 420m supertall & a 3.5mill.m2 urban design scheme.

As one of 14 Studio Design Mentors globally Ian leads the design review processes with regular reporting to the group. Ian is a firm believer in studio culture - Implementing once weekly lunch time design forums / CPD sessions as well as monday studio briefing sessions. Client facing, Ian has travelled frequently in China to meet and present to clients.

In 2009 Ian graduated as a Master of Architecture from the Royal College of Art London. Graduating with a distinction for both thesis and dissertation he was subsequently nominated for the Royal Institute of British Architects Presidents Silver medal. He also won the Conran Foundation Award that year and the New London Architecture Prize as well as securing a Solo exhibition at London's Building Centre. In 2006 Ian graduated with first class honours and was nominated for the Royal Institute of British Architects Presidents Bronze medal by The Birmingham School of Architecture.

In 2009 Ian founded i-n-d-j architecture & design and has been involved with a broad range of projects, displaying his skill and versatility as a designer; from commissions by the London Design festival with a lead installation at the Victoria & Albert Museum, a lead project for the Melbourne design festival, and a commission at the world famous ice hotel working with internationally acclaimed designer Ben Rousseau. Ian has been internationally published and has practised globally from the United Kingdom and Europe to New Zealand and Australia with work spanning all corners of the globe.

**EDUCATION** 2009  
**royal college of art**  
r.i.b.a. part II  
ma rca architecture  
[distinction](#)

2006  
**birmingham school of architecture**  
r.i.b.a. part I  
ba(hons)architecture  
[first class honours](#)

**EMPLOYMENT** may 2011 - present  
**broadway malyan architects**  
shanghai, pr china (Staff 40)  
role: associate designer

oct 2010 - may 2011  
**broadway malyan architects**  
shanghai, pr china (Staff 20)  
role: design leader

jul 2010 - oct 2010  
**woods bagot architects**  
melbourne, australia (staff 130)  
role: project professional

jul 2009 - Aug 2009  
**woods bagot architects**  
london (Staff 100)  
role: design leader.

jun 2008 - oct 2008  
**woods bagot architects**  
london (staff 100)  
role: project professional

oct 2006 - may 2007  
**fearonhay architects**  
auckland, new zealand (staff 15)  
role: assistant to project architect.

2001-2003  
**asa architects**  
swansea, u.k. (staff 5)  
role: architectural assistant

**TEACHING** 2010  
**architectural association**  
liam young diploma unit 6  
[quest critic](#)

2010  
**unitec auckland university**  
ba 'unknown-signals' major project  
[quest critic](#)

**AWARDS** 2011  
**hainan super tall**  
hainan (china) real estate  
[2 place finalist](#)

2009  
**conran foundation award**  
the conran foundation  
[winner](#)

2009  
**n.i.a. prize for architecture**  
new london architecture  
[winner](#)

2009  
**thesis design project**  
royal college of art  
[distinction](#)

2009  
**critical history dissertation**  
royal college of art  
[distinction](#)

2009  
**r.i.b.a presidents silver medal**  
royal college of art  
[nomination](#)

2008  
**c.p.d. one2one prize**  
royal college of art  
[winner](#)

2006  
**r.i.b.a. presidents bronze medal**  
birmingham school of architecture  
[nomination](#)

2006  
**louise anne ryland scholarship**  
birmingham school of architecture  
[nomination](#)

2006  
**nichol thomas prize for architecture**  
birmingham school of architecture  
[winner](#)

2006  
**the space**  
birmingham city coucil  
[highly commended](#)

**EXHIBITIONS** 2011 14 november - 21 november  
**rca secrets**  
royal college of art  
london

2011 13 march - 27 march  
**grange gardens sclupture exhibit**  
galerie8, london fields  
london

2010 14 november - 21 november  
**rca secrets**  
royal college of art  
london

2009 14 november - 21 november  
**rca secrets**  
royal college of art  
london

2009 21 July - 29 August  
**towards new capital solo exhibition**  
the building centre  
london

2009 06 Jul - 14 jul  
**rca graduate show 2009**  
royal college of art  
london

2009 9 Apr - 30 May  
**urban agriculture**  
the building centre  
london

2009 3 feb - 10 feb  
**boom! architecture interim show**  
royal college of art  
london

2008 14 nov - 21 nov  
**rca secrets**  
royal college of art  
london

2008 21 Jun - 5 Jul  
**rca ma architecture show**  
royal college of art  
london

2008 6 - 20 Jan  
**rca ma architecture show**  
royal college of art  
london

2006 12 - 20 jun  
**the end of year show**  
birmingham school of architecture  
birmingham

2006 15 - 29 may  
**louise anne ryland scholarship**  
birmingham school of architecture  
birmingham





curriculum vitae

PUBLICATIONS

01-02-2012  
**creative review**  
legacy of the river

14-11-2011  
**works: china**  
broadway malyan

24-09-2011  
**mr & mrs smith review**  
kengo kuma - opposite house beijing

01-03-2011  
**skyscraper news**  
pheonix tower

01-03-2011  
**hospitality interiors magazine**  
legacy of the river

01-03-2011  
**c3 magazine**  
legacy of the river

01-03-2011  
**mark magazine**  
3x3x3 taiwan tower

10-10-2010  
**wired magazine**  
legacy of the river

10-10-2010  
**usa today online**  
legacy of the river

05-10-2010  
**mr & mrs smith review**  
phillippe starck - JIA shanghai

04-08-2009  
**blueprint magazine**  
50 of the best uk design graduates

01-08-2009  
**london architecture diary**  
ian D-J guest editor

25-06-2009  
**the big squeeze**  
royal college of art 8th floor annual

25-05-2009  
**bldg big geoff manauh**  
london yields: urban agriculture

03-02-2009  
**big bang big crash**  
royal college of art ads2 interim publication

20-04-2009  
**building magazine**  
cities as agricultural resources article and exhibition review.

20-04-2009  
**bd - building design magazine**  
london yields exhibition review

01-09-2008  
**icon magazine**  
graduate show review

PUBLICATIONS

01-08-2008  
**icon magazine**  
london festival of architecture review

15-05-2008  
**everything counts**  
royal college of art 8th floor annual

29-11-2007  
**value added architecture**  
royal college of art ads2 interim publication

2006  
**architecture year catalogue**  
birmingham school of architecture

SKILLS

**computer aided design**  
ian is an expert in c.a.d with formal training from David Fano at international consultancy CASE NYC. At WoodsBagot ian was part of a pilot team leading the global roll out of BIM software: REVIT. He is a strong advocator of an efficient intergrated workflow using parametric design. ian is an expert in complex geometry using Rhino & Grasshopper graphic script, this preeminent method was successfully tested with Hainan supertall. A proven workflow technique that is in place for both large and small scale projects.

**autoCAD**  
**autodesk revit**  
**sketchup**  
**rhinoceros with VRAY and grasshopper**  
**rhino r.v.b.** (basic)

**computer graphics**  
ian is proficient in graphic software, with experience in web site design (html) and image manipulation as well as report and multimedia production. ian possesses the critical selection of skills for intergrated project presentation.

**adobe creative suite:**  
**photoshop**  
**illustrator**  
**indesign**  
**after effects**  
**dreamweaver**  
**final cut pro**  
**imovieHD**  
**microsoft office**

**craft**  
ian is proficient in hand skills, always keen to "get my hands dirty" he has carpentry experineice, installation building using high tech rapid manufacturing equipment or craft based tools like ice chisels. ian is a firm believer in physical modelling - an intergral part of the design process.

**model making**  
**technical drawing**  
**sketching**  
**painting**  
**etching**  
**basic carpentry**  
**ice sculpting**

INTER-PERSONAL

ian is a natural leader able to elicit the very best from colleagues & team members. He is independent, resourceful & can show great initiative. Thriving under pressure ian can assert a level of autonomy and use innate decision making to produce the best results.

ian is able to strategize & manage time & workloads well, with an ability to work quickly & efficiently whilst delivering the highest quality of design.

Design quality is of great importance to ian - a deep rooted philosophy that purveys at every level of work.

PUBLIC SPEAKING

ian is a confident orator giving regular external client an internal team presentations. He has spoken on art & architecture at various events in shanghai and internally to design studios globally with the arrangment & chair-ing of 'pecha kucha' events at woods bagot in london and melbourne. ian holds a strong belief in encouraging vibrant studio culture - pecha kucha is one method of engaging people in design dialogue.

2012 March - forthcoming  
**pecha kucha tk #90**  
tokyo pecha kucha event

2011  
**pecha kucha sh #18**  
shanghai pecha kucha event

2011  
**madness 5.1**  
shanghai creatives network

PERSONAL

ian is passionate about architecture and design, determined to experience & understand theories, ideas & concepts, keen constantly to ask questions. ian is a keen traveller sharing the belief that 'an unexamined life is not worth living' (socrates).

**travel**  
australia, austria, balearic isles, belgium, cambodia, canary isles, china, crete, cook islands, corfu, france, germany, hong kong, india, italy, jamaica, japan, kenya, laos, lichtenstein, malaysia, myanmar, mexico, netherlands, new zealand, russia, spain, sweden, switzerland, thailand, usa, vietnam.

**nationality**  
british

**dob**  
03 november 1982

**language**  
english - mother tongue  
mandarin - basic (oral)





## broadway malyan architects

**Shanghai PR China**  
**International award winning practice**  
**with 14 offices in four regions**  
www.broadwaymalyan.com

As a design leader in Broadway Malyan's Shanghai studio in the foremost emerging market PR China. Scale of projects and time scale called for Ian's design dexterity and organisational skills, consistently high quality work in short time frame.

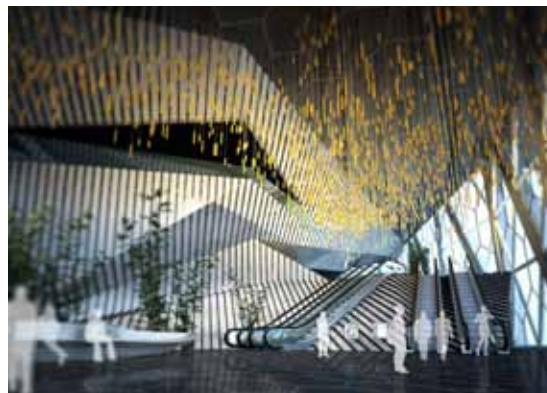
Ian's most recent achievement was to lead a US\$1.5b high profile scheme to finalist place in an international competition.

## phoenix supertall

retail / workplace / hospitality

hainan real estate  
haikou, china  
US\$ 1.5 bill  
330,000 sqm  
2011

**design leader**

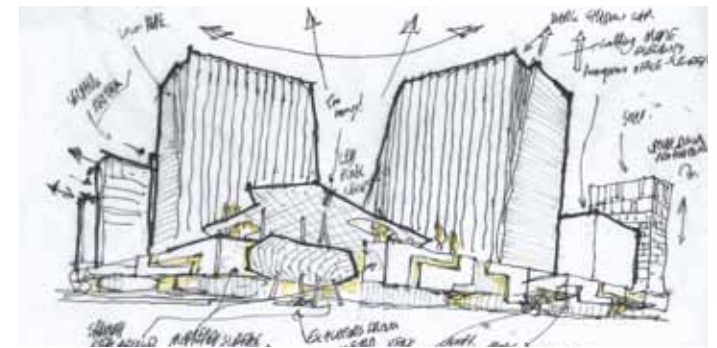


## guogongzhong

mixed use

yintai metroland  
beijing, china  
US\$ N/A  
130,000 sqm  
2012

**design leader**





## broadway malyan architects

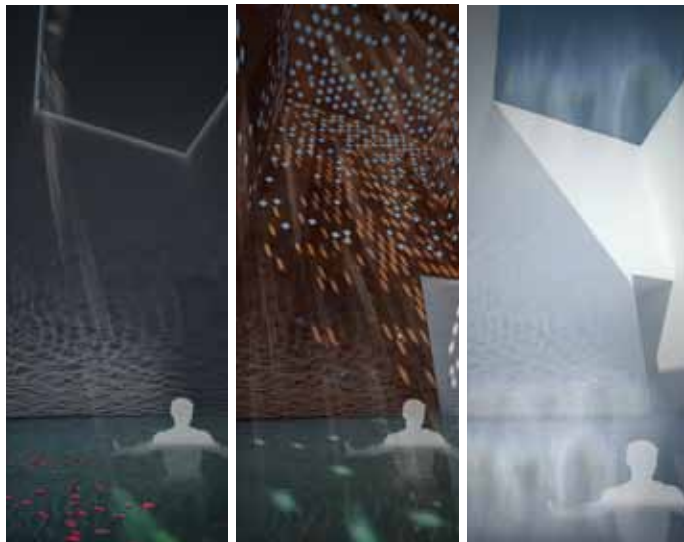
**Shanghai PR China**  
**International award winning practice**  
**with 14 offices in four regions**  
[www.broadwaymalyan.com](http://www.broadwaymalyan.com)

As a design leader in Broadway Malyan's Shanghai studio in the foremost emerging market PR China. Scale of projects and time scale called for Ian's design dexterity and organisational skills, consistently high quality work in short time frame.

Ian's most recent achievement was to lead a US\$1.5b high profile scheme to finalist place in an international competition.

### qixingling spa resort

hospitality  
 Yuán Lóngpíng  
 qixingling, hainan, china  
 US\$ N/A  
 sqm M/A  
 2012  
**design leader**



### shanghai 2.0 - huangpu

masterplanning / urban design  
 lujazhui development corp  
 shanghai, china  
 US\$ N/A  
 3.5mil sqm  
 2011  
**design leader**



### sunpeak sales pavilion

retail / workplace / lifestyle  
 sunpeak  
 changsha, china  
 US\$ N/A  
 2000sqm  
 2011  
**design leader**





## fearonhay architects

**Auckland, New Zealand**  
**Award winning high-end residential architect.**

www.fearonhay.com

Ian acted as project professional assisting to the project architect. Worked on projects in Auckland and New York. High-end luxury design which necessitated a full constructional understanding and design resolution with the finest attention to detail.

Work on projects on the other side of the globe required careful management to ensure the highest quality was achieved.

## the northern club

hospitality

the northern club  
auckland, new zealand  
US\$ 1.8 mill  
250 sqm  
2006

**project professional**



## hudson square

lifestyle

private  
tibeca, new york, usa  
US\$ 13,5 mill  
550 sqm  
2006

**project professional**



## victoria quarter

lifestyle / hospitality

v.d.q.s.l.  
auckland, new zealand  
US\$ N/A  
5,850 sqm  
2006

**project professional**





## woods bagot architects

London, Melbourne  
International award winning practice  
with 15 offices in five regions  
www.woodsbagot.com

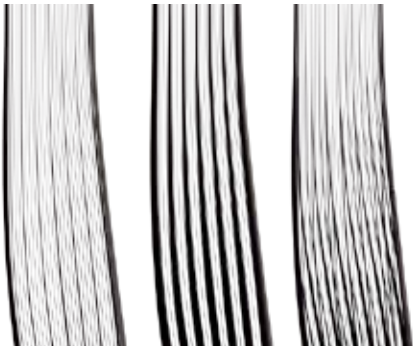
Acting as a designer, project professional and lead designer for select projects Ian worked on schemes across the world from Woods Bagot's London and Melbourne studios. Ian was part of a pilot team introducing the cross region roll out of Autodesk's Revit, demonstrating the power of parametric and building information modelling. Ian was instrumental in competition wins as well as successful short listings, developing design methodology and workflow patterns.

### corporate headquarters

workplace / lifestyle

yota telecommunications  
st petersburg, russia  
US\$ 2,5bill  
300,000sqm  
2009

project professional

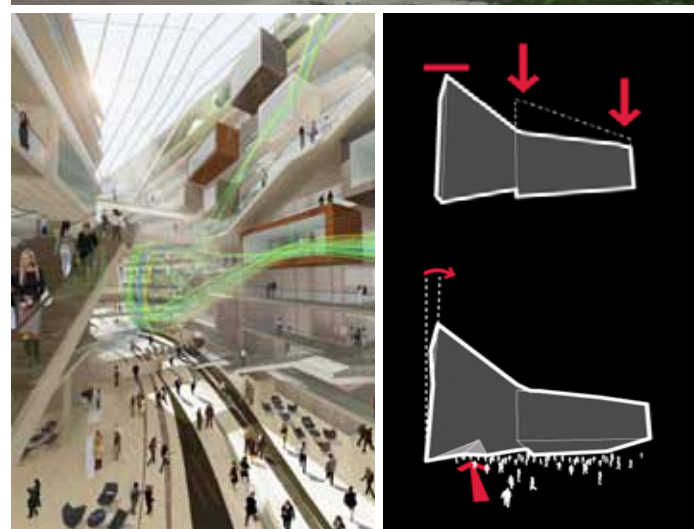


### corporate headquarters

workplace

geneva, switzerland  
US\$ 70mill  
25,000sqm  
2009

project professional



### courtyard tower

workplace / lifestyle

meraas developments  
dubai, united arab emirates  
US\$ N/A  
47,000sqm  
2008

lead designer





## i-n-d-j architecture & design

International multidisciplinary  
design & research studio.

www.i-n-d-j.com  
www.extreme-design.net

Ian founded i-n-d-j architecture and design in 2009 to pursue projects which form a continuing body of research in design methodologies to be implemented practicably in large scale practice life. With a bold and uncompromising approach to design sce-

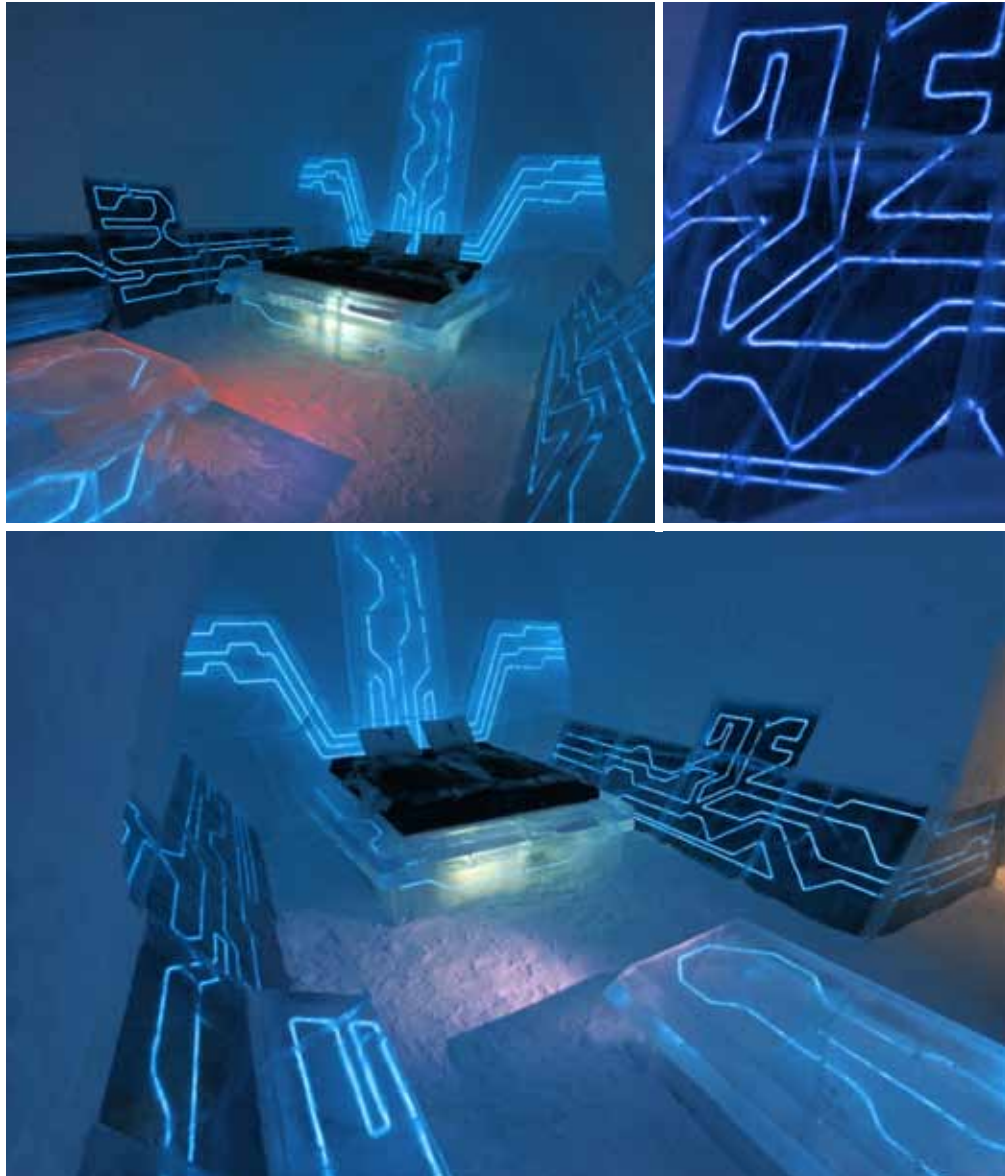
narios the i-n-d-j research studio has had commissions from Disney, design festivals in London and Melbourne. Held solo exhibition, publications and pursued academia in institutions such as the London's AA and Auckland university.

### legacy of the river

lifestyle / hospitality / installation

the ice hotel  
jukkasjavi, arctic sweden  
US\$ N/A  
40sqm  
2010

lead designer / builder



### wasted @ the V&A

installation

victoria & albert museum  
london, united kingdom  
US\$ 4000  
72sqm  
2009

lead designer / builder



### blacklight

product

luminaire development  
global  
US\$ N/A  
2012

lead designer

